

*Renée Sellers*

**RENÉE SELLERS DESIGN PORTFOLIO**

[www.reneesellers.com](http://www.reneesellers.com)

# SKETCHUP + ENSCAPE



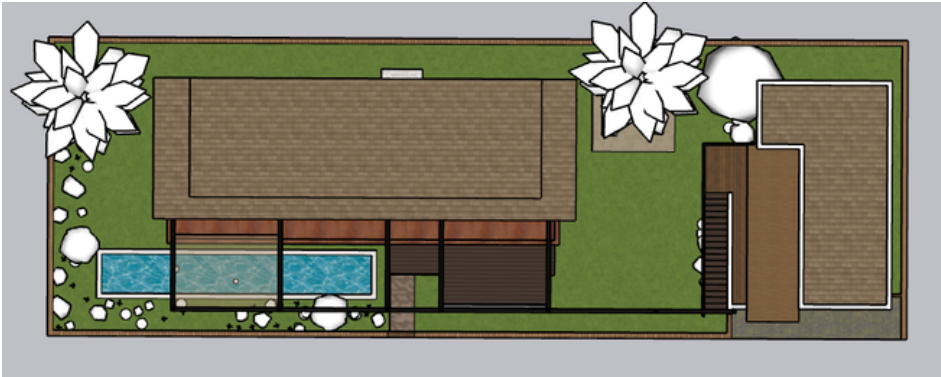
## 700 PALMS RESIDENCE

This project involved a full digital reconstruction of the 700 Palms Residence using SketchUp and Enscape. Referencing the original floor plans and structural drawings, the residence was modeled from the ground up to ensure accuracy and detail. The final deliverables included precise floor plans, elevations, arial views, and high-quality 3D renderings that showcase both the architectural integrity and spatial experience of the home.

# SKETCHUP + ENSCAPE



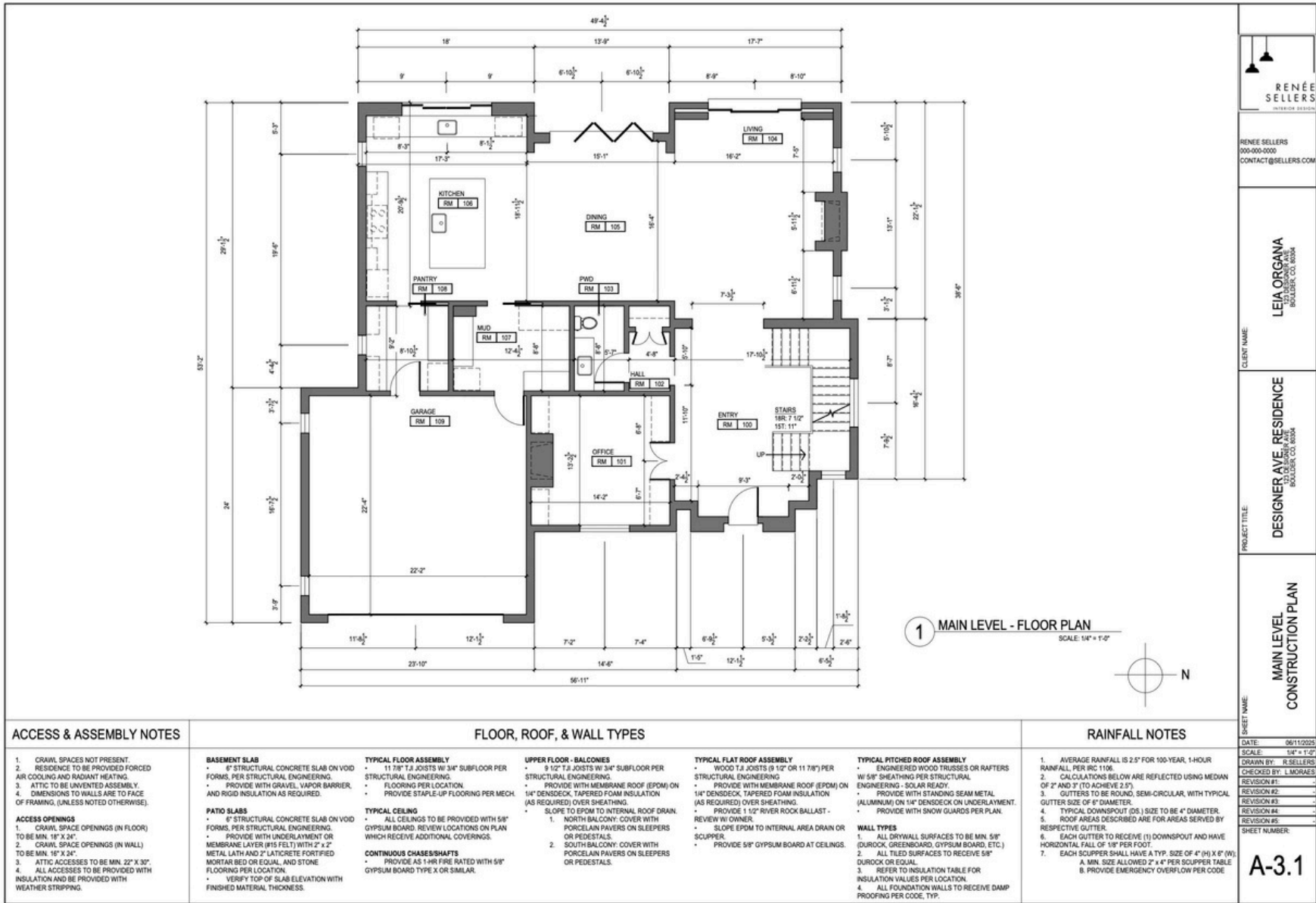
FRONT ELEVATION



2D TOP VIEW



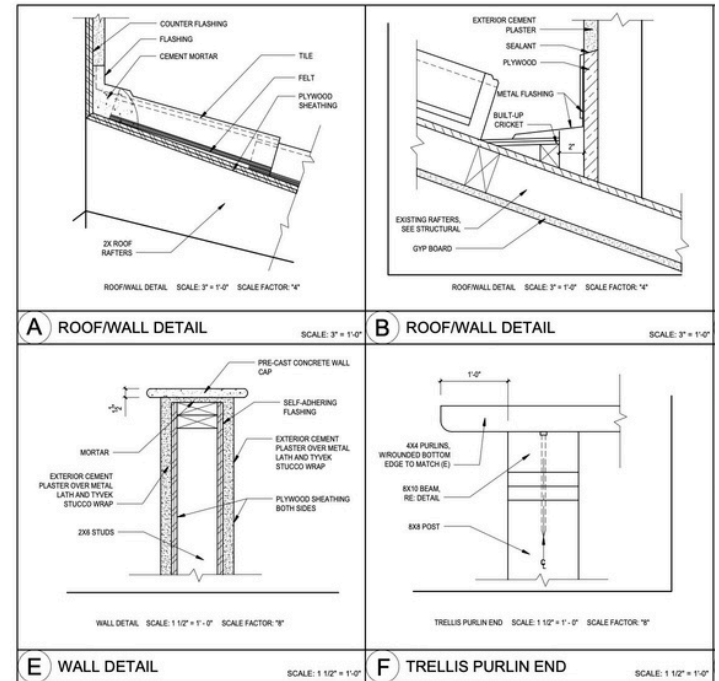
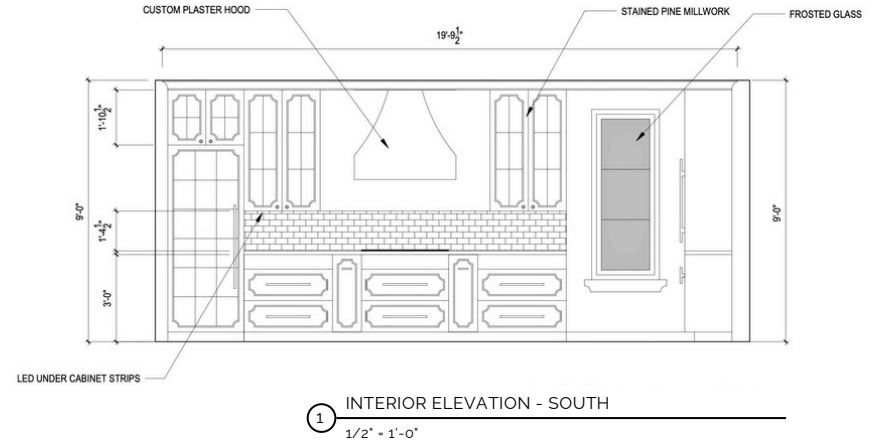
2D TOP SECTION



## CONSTRUCTION DRAWING SET

This project focused on recreating a 12 page set of construction documents from an existing site using AutoCAD. The scope included floor plans, reflected ceiling plans, elevations, furniture layouts, and detailed drawings. Successfully completing this work required proficiency in layer management, line weight control, block creation, dimensioning, and annotation standards.

# AUTOCAD



# LIGHTING DESIGN

## LOFT LIGHTING - L.A. JUNGLE

### CONCEPT





The lighting program for the loft was designed around the feeling of a tropical jungle, creating a moody atmosphere.

Fixtures resembling organic shapes contributed to the overall feel, while hidden LEDs added depth, and decorative lamps with natural materials such as rattan complemented the aesthetic.

### INSPIRATION



### LIGHT MAP

-  Light onto Vertical Surface
-  Light onto Horizontal Surface
-  Even / Task Light
-  General Ambient



# LIGHTING DESIGN

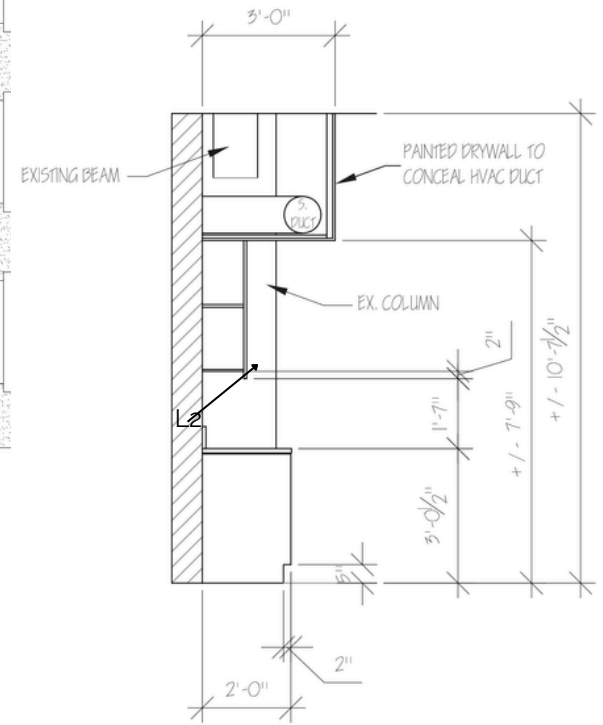
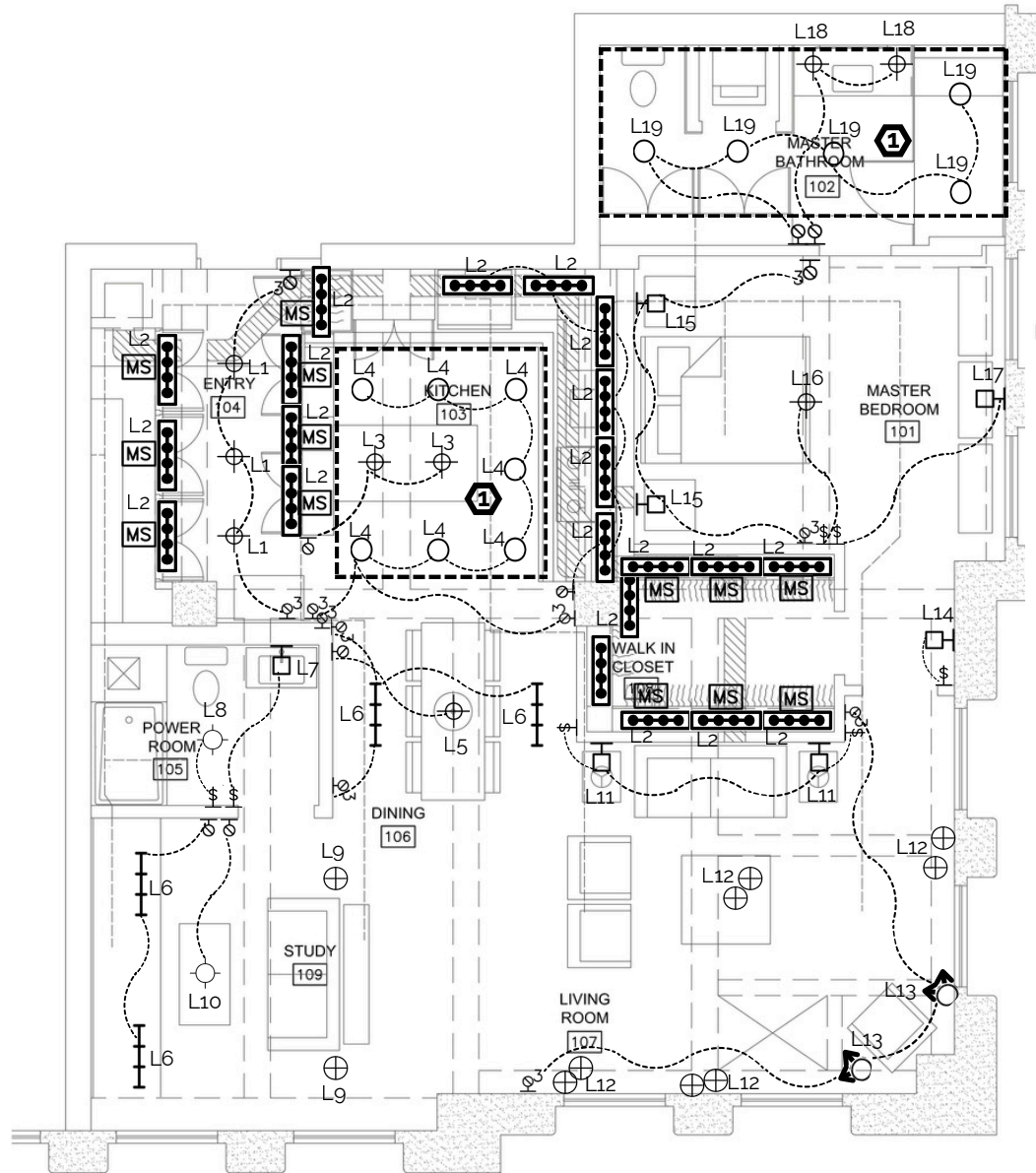
## LOFT LIGHTING - L.A. JUNGLE

### LIGHTING SYMBOL LEGEND

⊖	DIMMER
⊖ <sub>3</sub>	3-WAY DIMMER
⊞	SWITCH
MS	MOTION SENSOR
○	RECESSED
⊕	PENDANT
□	WALL SCONCE
⊕	FLOOR LAMP
⊖	RECESSED UNDER CABINET
— —	TRACK LIGHT
○	MONO POINT
⊕	SURFACE MOUNTED - FL

### NOTES

- ① DROPPED CEILING
- ② MOTION SENSOR IN: ENTRY CABINETS + TOE TICK, WAL CABINETS



①  
KITCHEN CABINET SECTION  
1/2" = 1'-0"

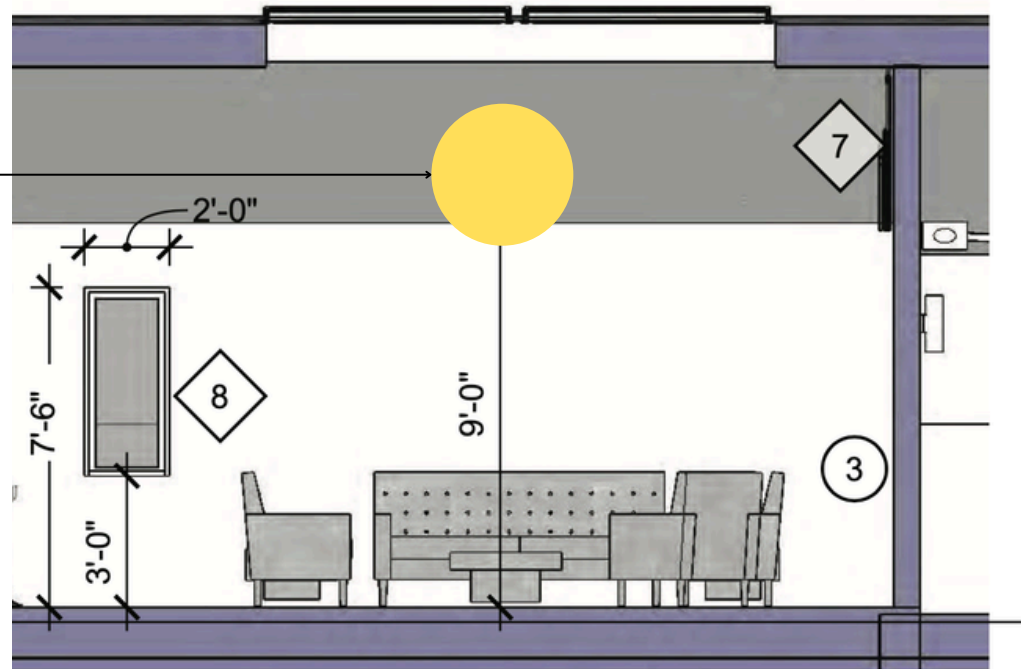
① REFLECTED CEILING PLAN  
1/4" = 1'-0"

# LIGHTING DESIGN

## AMBIENT LAYER

Fixture: Antigua XL Drum Chandelier

Application: Above LR coffee table



### TEAR SHEET

Antigua XL Drum Chandelier  
Item # CHC 5017AB/NAB

Designer: Chapman & Myers

Height: 34"

Width: 42"

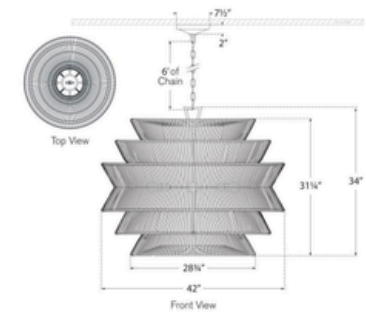
Canopy: 7.5" Round

Finishes: AB/NAB, BZ/NAB, PN/NAB

Socket: 4 - E26 Keyless

Wattage: 4 - 15 LED A19

Weight: 41 Pounds



VISUAL COMFORT & CO.



# COLOR THEORY

## DESIGNING WITH COLOR SCHEMES

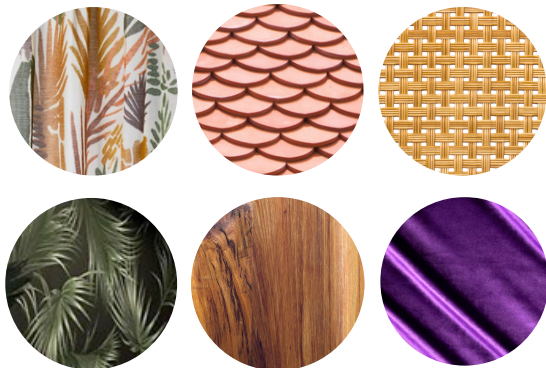
### CONCEPT

Four distinct color schemes were used to design two residential and two commercial spaces. Each space incorporated tones, shades, and tints while detailing interior finishes, wall coverings, paint colors, decorative items, and furniture.

### MATERIALS

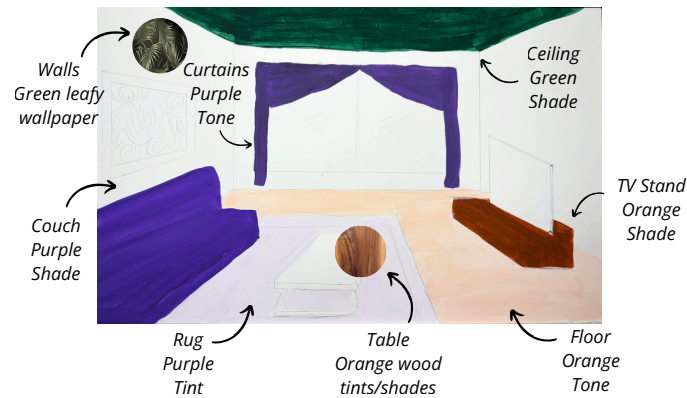
Gouache, canvas paper.

### INSPIRATION

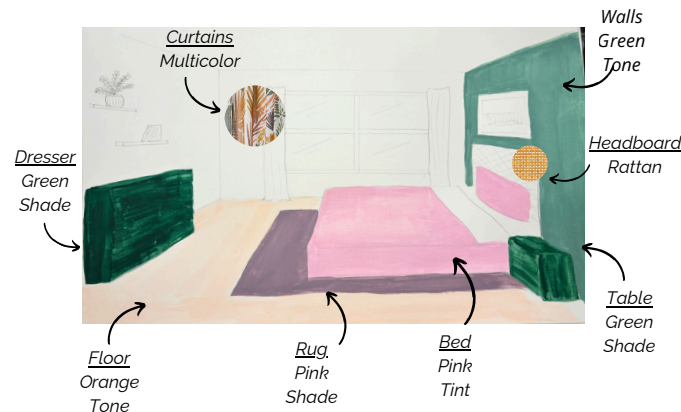


### RESIDENTIAL

LIVING ROOM - TRIAD: PURPLE/ORANGE/GREEN

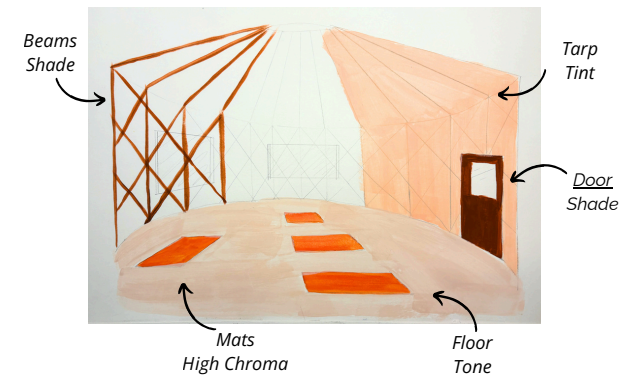


BEDROOM - SPLIT COMPLIMENTARY: GREEN/ORANGE/PINK

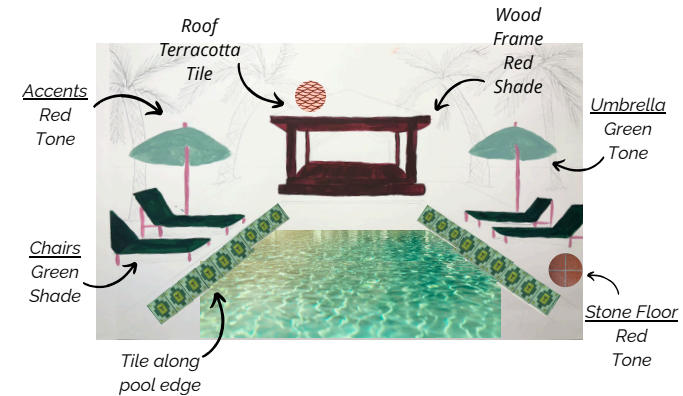


### COMMERCIAL

YOGA YURT - MONOCHROMATIC: ORANGE



POOL LOUNGE - COMPLIMENTARY: RED/GREEN



# DESIGN ELEMENTS

## 3D MODELING - ICELANDIC VISITOR CENTER

### SITE INFO

Set in the Icelandic wilderness on a rocky outcrop overlooking a deep ravine with a river.

### CONCEPT

The sweeping white curves of the original sculpture served as the inspiration for an Icelandic Visitor Center. Drawing from the region's signature clean and modern aesthetic, the space was an architectural statement and a versatile community space, offering visitors an immersive experience.

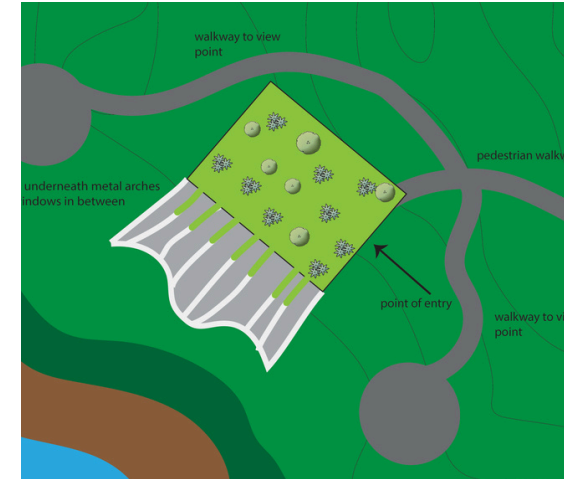
### MATERIALS

Foam core, cork board, presentation paper, fake moss paper, construction paper, clay, glue, small models.

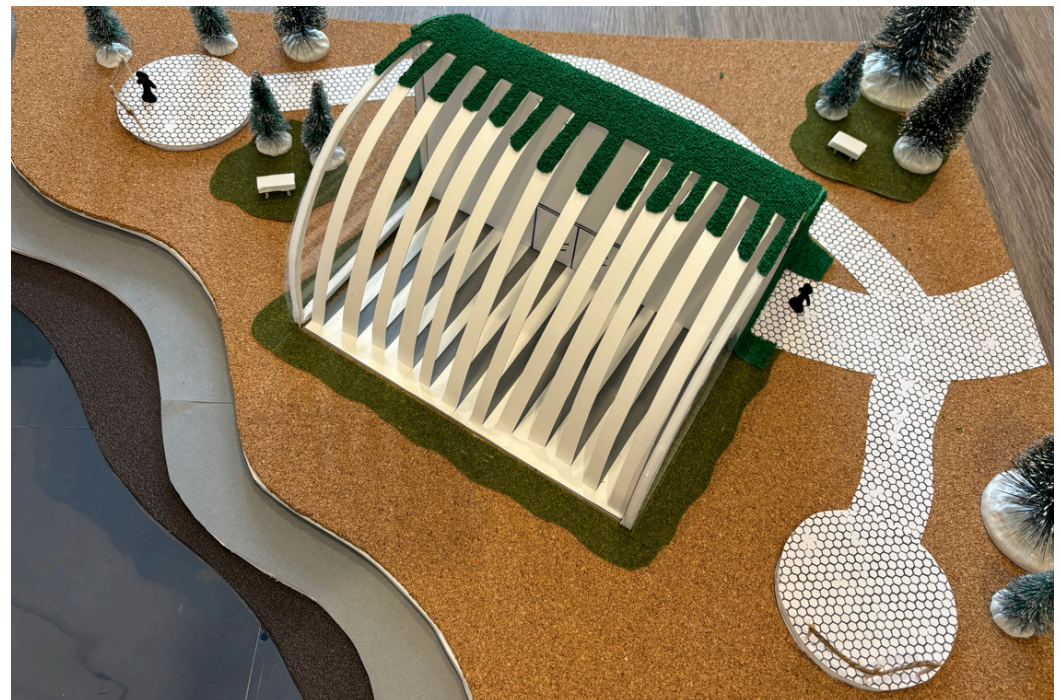
### INSPIRATION



INSPO SCULPTURE



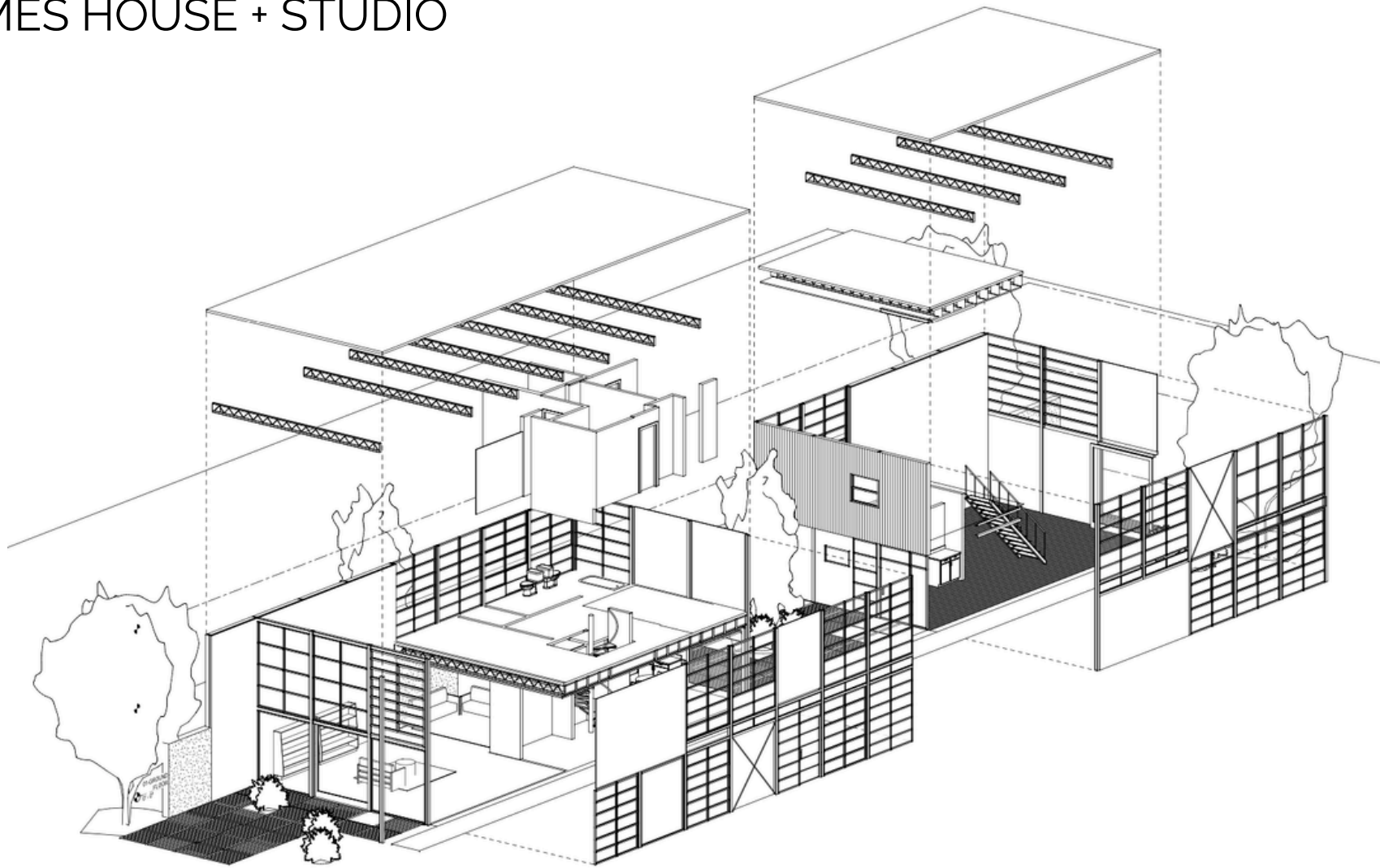
SITE PLAN



FINAL DESIGN

# DIGITAL DESIGN: REVIT

## EAMES HOUSE + STUDIO



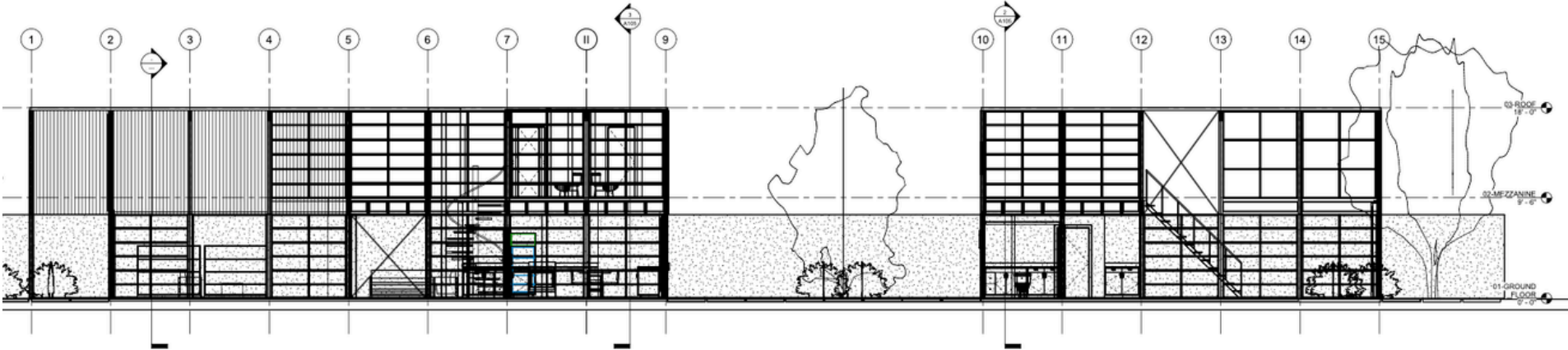
EXPLODED AXONOMETRIC  
1/4" = 1'-0"

### CONCEPT

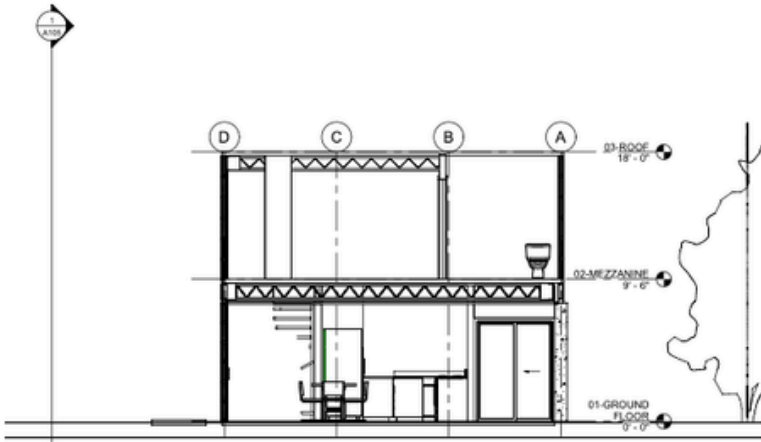
The project was an in-depth recreation of the iconic *Eames House and Studio* using Revit. Using original floor plans and structural drawings, the house was built from scratch, producing detailed floor plans, elevations, axons, and 3D views.

# DIGITAL DESIGN: REVIT

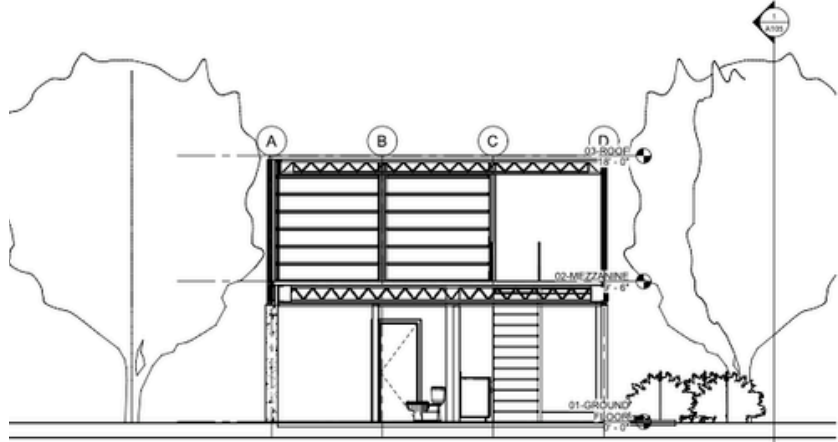
## EAMES HOUSE + STUDIO



SECTION 2  
1/4" = 1'-0"



SECTION 3  
1/4" = 1'-0"



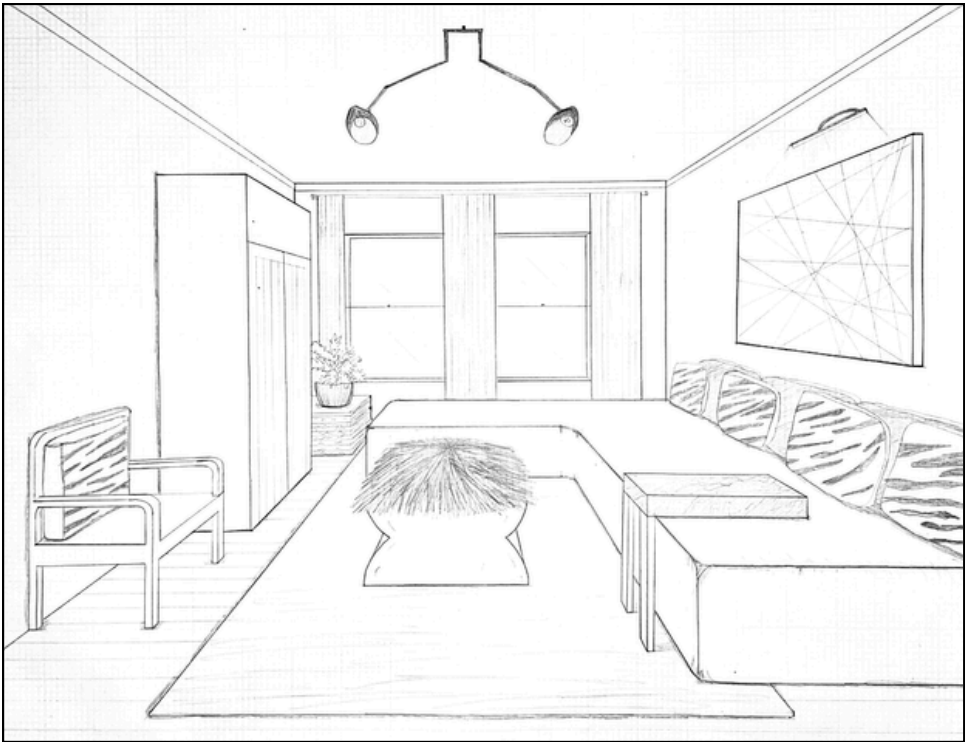
SECTION 4  
1/4" = 1'-0"

# PERSPECTIVE LINE DRAWINGS

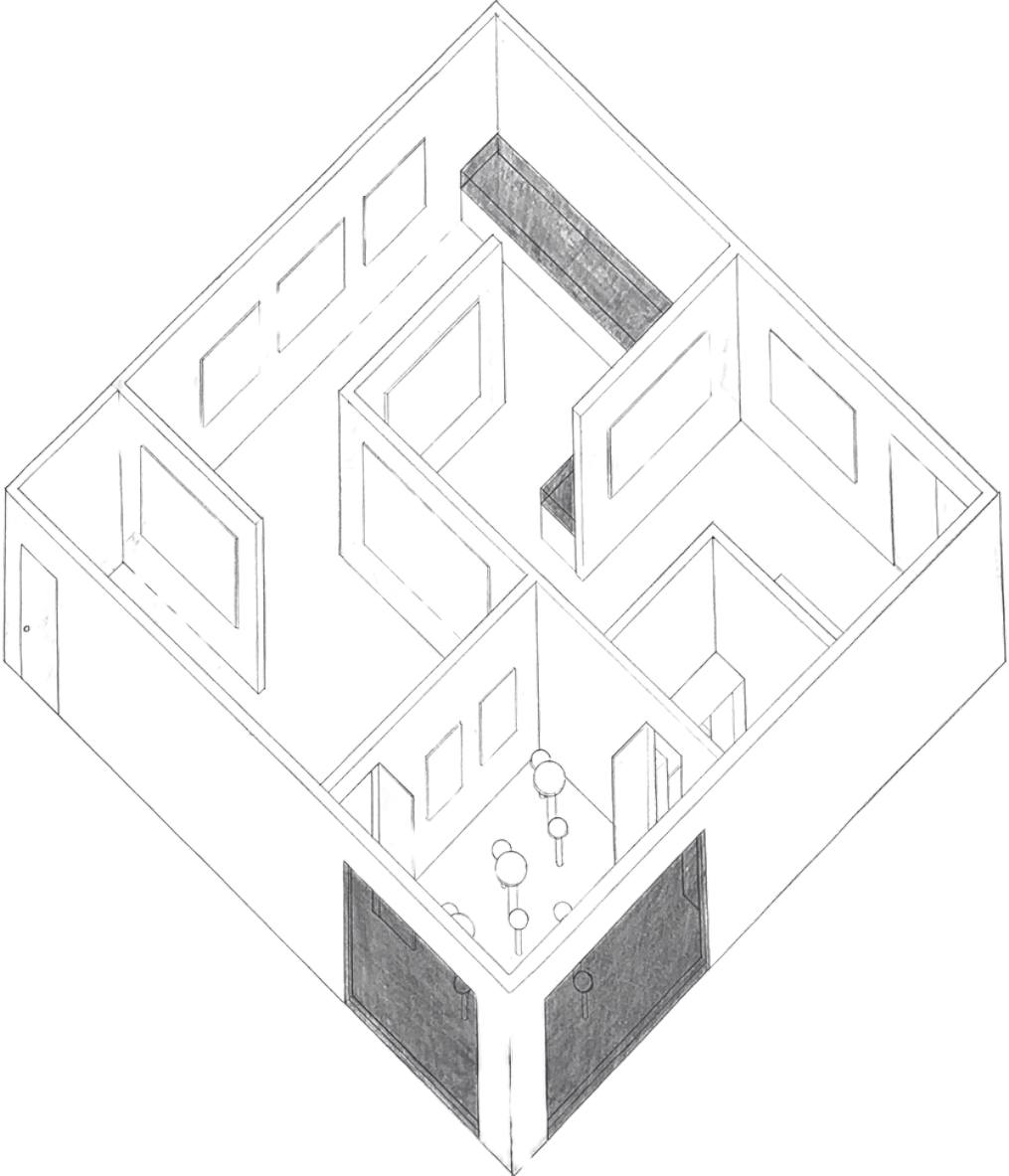


○ 1 POINT PERSPECTIVE  
1/2" = 1'-0"

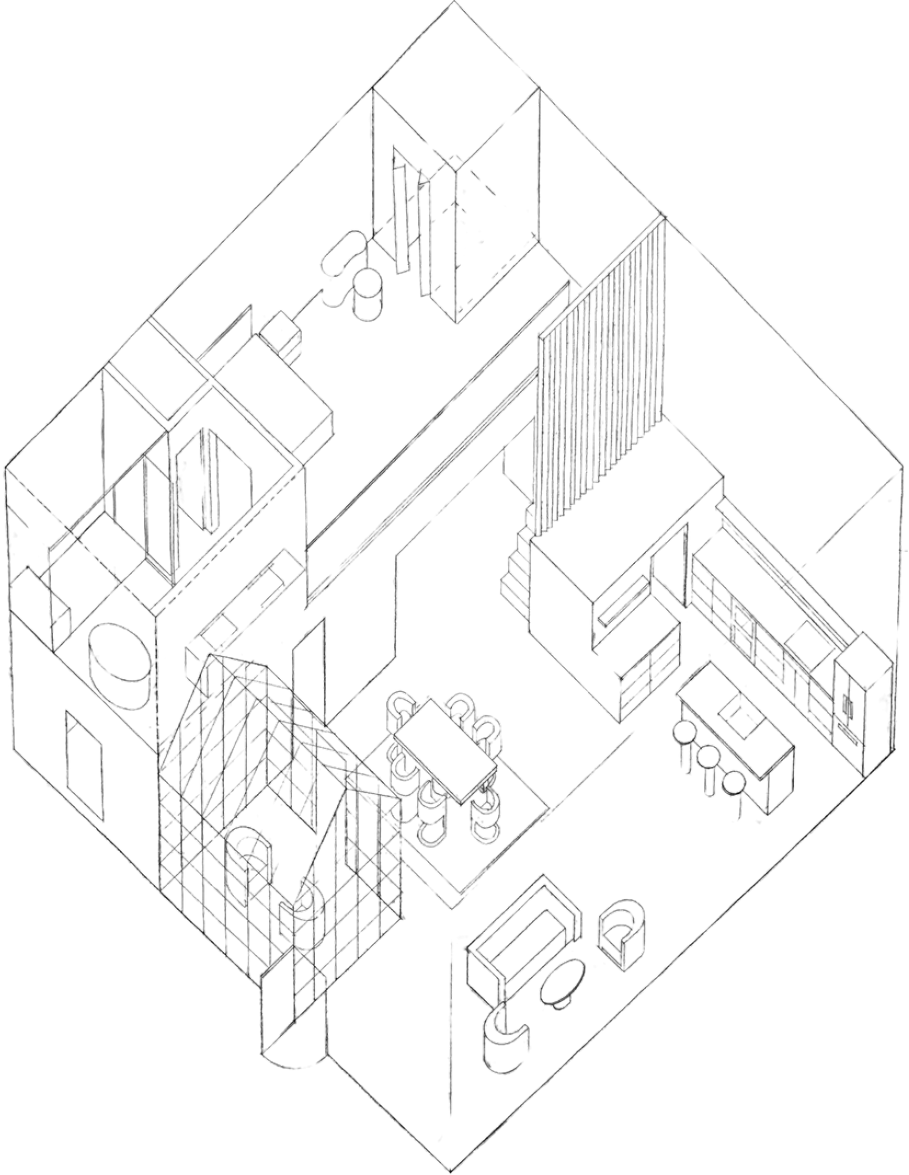
○ 2 POINT PERSPECTIVE  
1/2" = 1'-0"



# HAND DRAFTING



ART GALLERY - AXON  
1/4" = 1'-0"



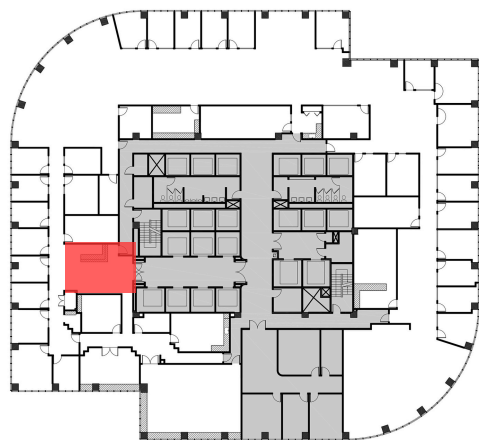
2 STORY LOFT - AXON  
1/4" = 1'-0"

# SURFACE MATERIALS

## RECEPTION AREA

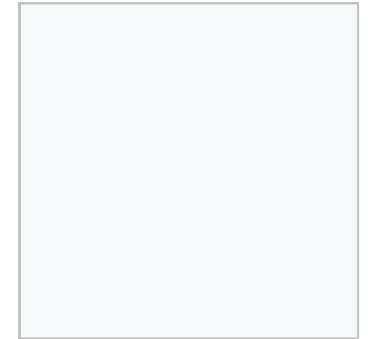
### WALLS

- Acoustic Wallcovering [WC-1]
- 27 1/2" x 15 1/2"
- ArchSystems Composition Cork in Bege
- Natural 100% renewable cork bark
- Low VOC, NRC = 0.3



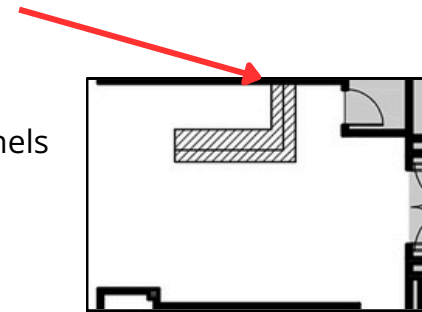
### CEILING

- Painted Gyp Board [PT-1]
- Benjamin Moore Eco Spec: INTERIOR LATEX FLAT N373 in Super White
- Low to Zero VOCs
- CERTIFIED Asthma & allergy friendly, Green Seal Certified



### ACCENT WALL

- Acoustic Cork [WC-2]
- 39.37" x 39.37"
- GENCORK "Corknature" Panels
- 100% natural & sustainable expanded cork



### FLOORING

- Terrazzo Floor Tile [TR-1]
- Terrazzo in LEED Series 12
- 70% post-industrial/consumer recycled aggregates
- GREENGUARD Certified, Zero VOCs

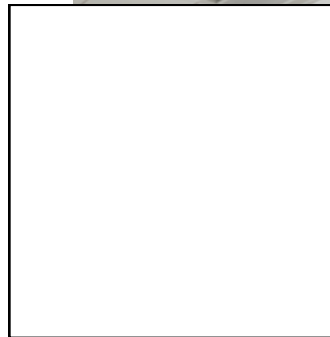


# SURFACE MATERIALS

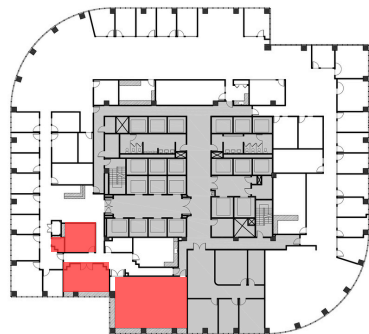
## CLIENT FACING: BOARD & CONFERENCE ROOMS

### CEILING

- Mineral Fiber Acoustic Ceiling Tile [CL-1]
- 24"x24", 24"x48" [CL-2] where applicable)
- USG Mars High-NRC Acoustical Panels in Flat White 050
- NRC .90, CAC up to 40
- GREENGUARD Gold Certified, low emitting performance
- Anti-mold & mildew, 27% recycled content

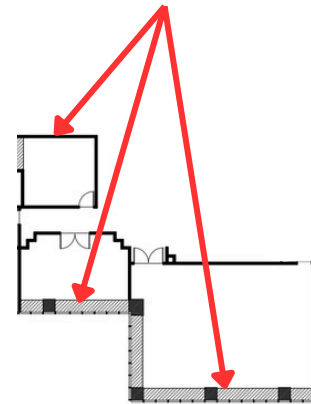


- Painted Gyp Board [PT-1]
- Benjamin Moore Eco Spec: INTERIOR LATEX FLAT N373 in Super White



### ACCENT WALL

- Acoustic Paneling [WC-4]
- 32" x 32" x 8"
- ModularArts AuralScapes Zelle in Light Brown
- Made of gypsum green material, fire safe, flammable, no off-gasing
- High sound absorption



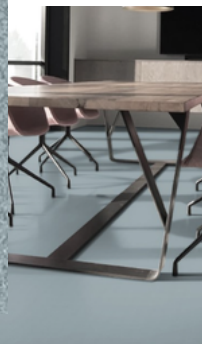
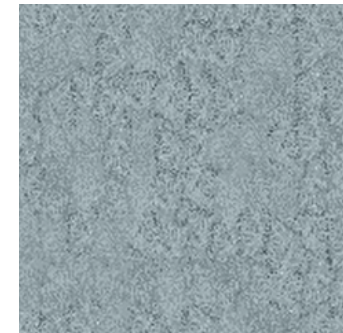
### WALLS

- Painted Drywall [PT-2]
- Benjamin Moore Eco Spec: INTERIOR LATEX FLAT N373 in Palmer Green
- Low to Zero VOCs
- CERTIFIED Asthma & allergy friendly, Green Seal Certified



### FLOORING

- Broadloom Carpet [CB-2]
- Bently Mills Regis Place in Euphoria, 12 ft
- 100% PVC Free, Low VOCs, responsible sourcing of raw materials



# HISTORY OF INTERIOR DESIGN

## DESIGN CONCEPT

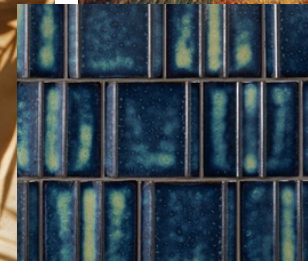
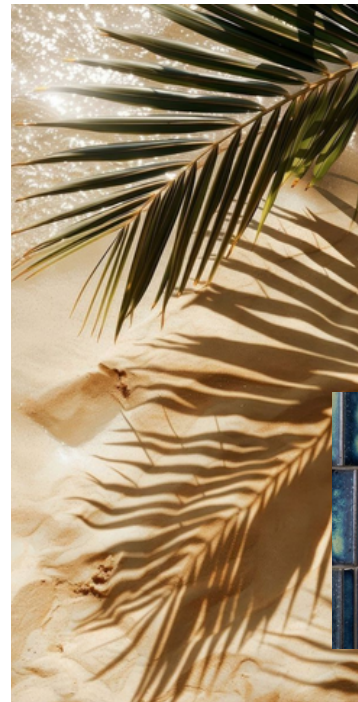
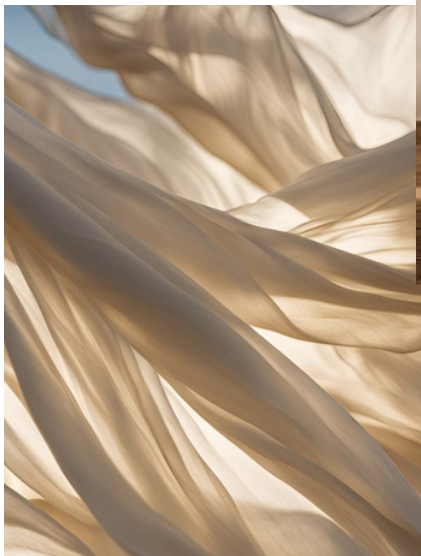
- For the everyday civilian to indulge
- Place to stock up on perfumes, makeup, and socialize
- Natural light, airy, elegant, earthy, minimalist, refined
- Luxurious textures
- Open courtyard with reflection pool, vanity areas, comfy lounge, tall shelves with herbs and tinctures



*Cosmetic Box of the Royal Butler Kemeni  
1805 BCE Middle Kingdom  
For the pharaoh Amenemhat IV*

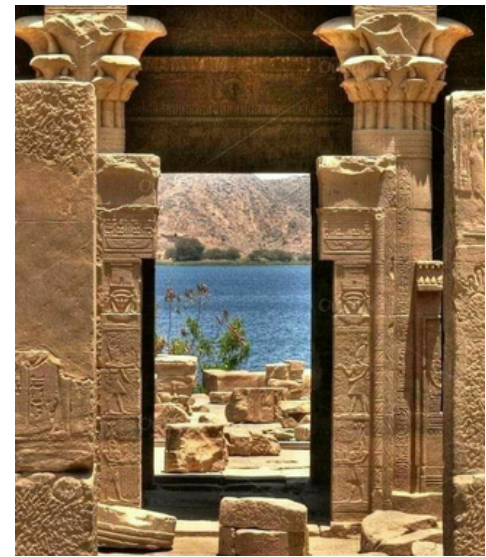
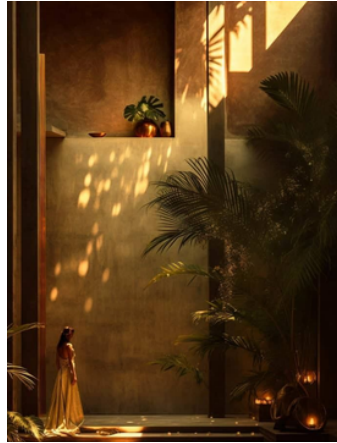


## PALETTE + MATERIALS



# HISTORY OF INTERIOR DESIGN

## DESIGN ELEMENTS



## LIGHTING + DECOR



# HISTORY OF INTERIOR DESIGN

## MIDJOURNEY RENDERINGS



# STUDIO 1 - COMMERCIAL DESIGN

## MEDITATION PAVILION SKETCHES

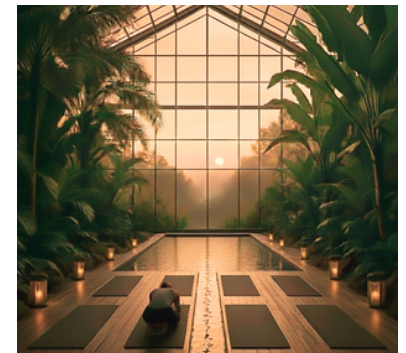
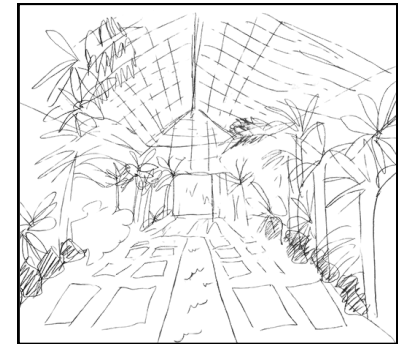
### DESIGN CONCEPT

- **The Granite Hotel:** luxury highly exclusive Brutalist resort in the Brazilian jungle.
- **Program Summary:** fully furnished lobby and gift shop, 3 unique hotel room floor plans, restaurant plan with catering offices, accessory/amenity building, overall site map

### PALETTE + MATERIALS

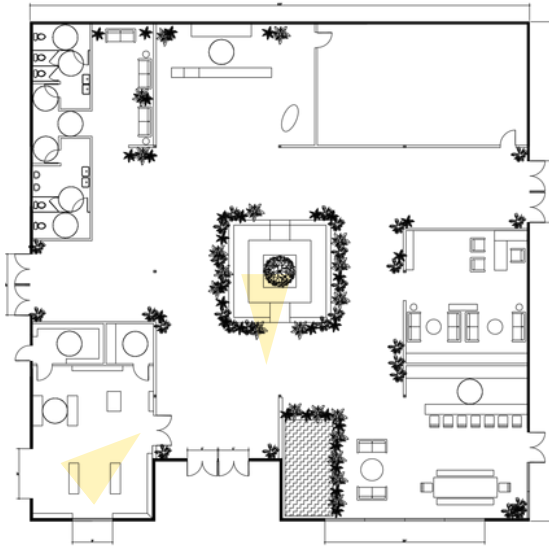


MATTE BLACK  
RAW CONCRETE  
WHITE STONE  
TROPICAL GREENERY  
WARM WOOD TONES  
BRASS ACCENTS

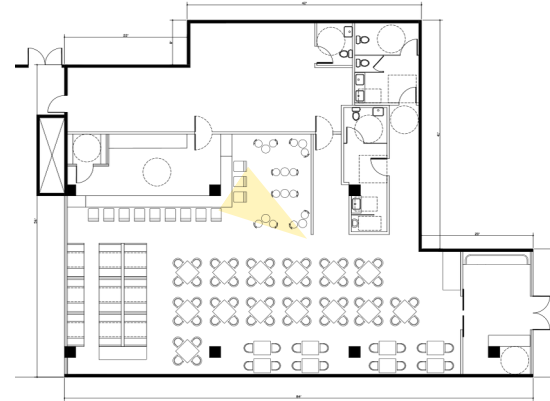


# STUDIO 1 - COMMERCIAL DESIGN

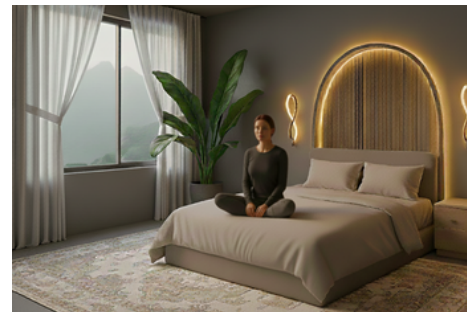
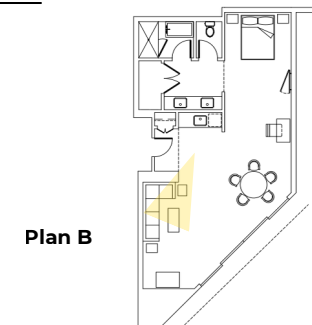
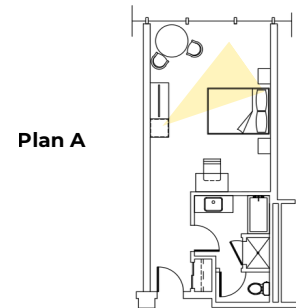
## LOBBY FLOOR PLAN



## RESTAURANT FLOOR PLAN



## SUITE FLOOR PLANS

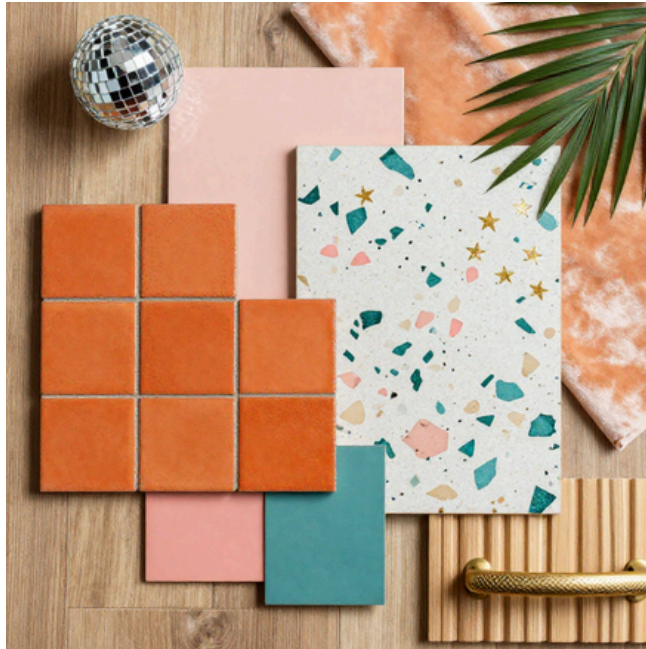


# STUDIO 2 - RESIDENTIAL DESIGN

## DESIGN CONCEPT

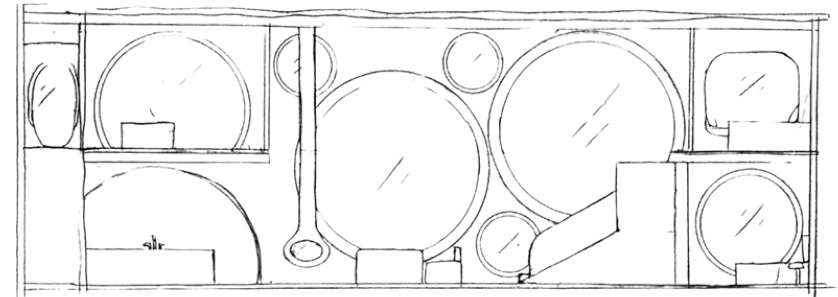
- **The Nova Loft:** A retro-futuristic loft defined by sweeping curves and luminous glamour, where a skylit mezzanine catwalk links the primary bedroom and library to the living space below, framing a double-height interior with large circular windows
- **Program Summary:** *first floor* - living and dining, cocktail bar, kitchen, guest bed + bath, powder room, *second floor* - study + library, mezzanine w/reading nook, primary bed + bath

## PALETTE + MATERIALS

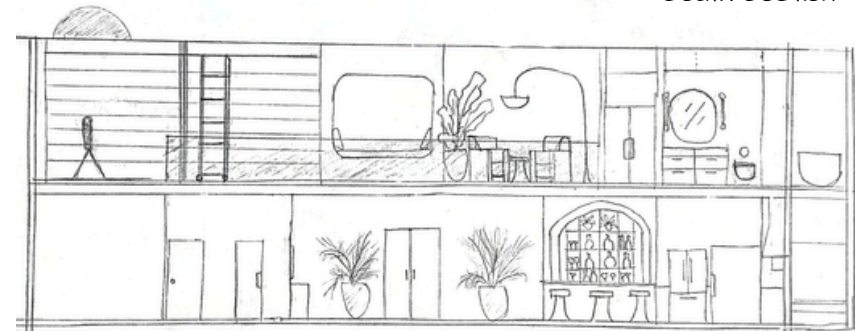


WARM MUTED TONES  
ZELLIGE TILE  
SOFT VELVET FABRICS  
POPS OF GLAMOUR  
CUSTOM TERRAZZO  
BRASS ACCENTS  
REEDED PANELING

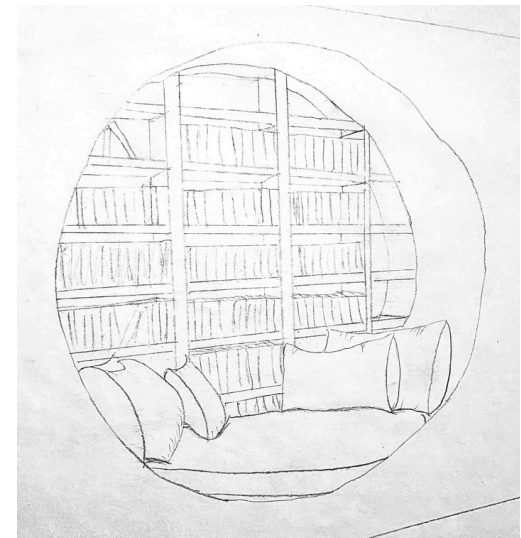
## SCHEMATIC DESIGNS



South Section



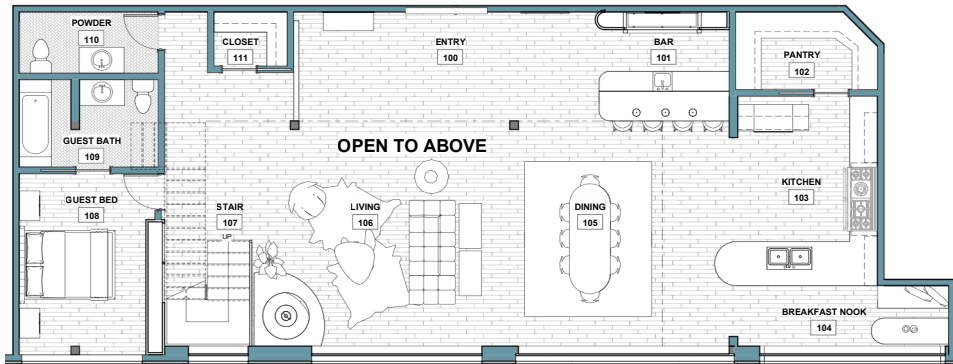
North Section



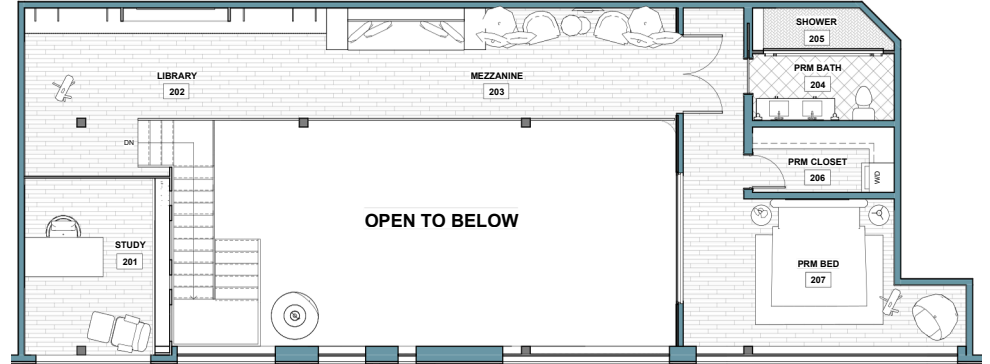
Reading Nook Sketch

# STUDIO 2 - RESIDENTIAL DESIGN

## FLOOR PLANS + SECTIONS (REVIT)



① FLOOR PLAN - MAIN LEVEL



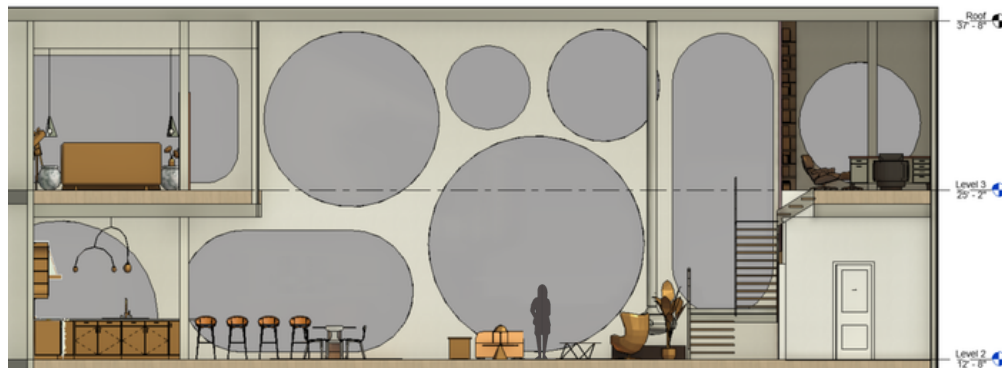
② FLOOR PLAN - UPPER LEVEL



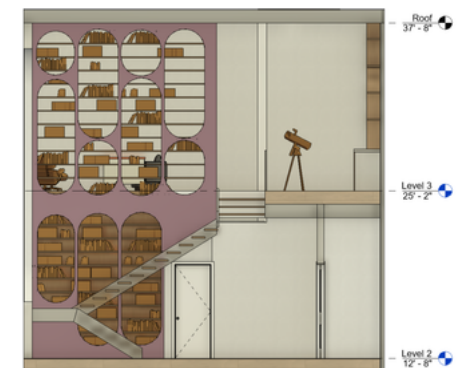
① NORTH SECTION



② EAST SECTION



③ SOUTH SECTION



④ WEST SECTION

# STUDIO 2 - RESIDENTIAL DESIGN

## RENDERS (ENSCAPE)

---



EXTERIOR - FRONT



DINING + LIVING



MEZZANINE LIBRARY



MAIN LEVEL ENTRY